



Campion

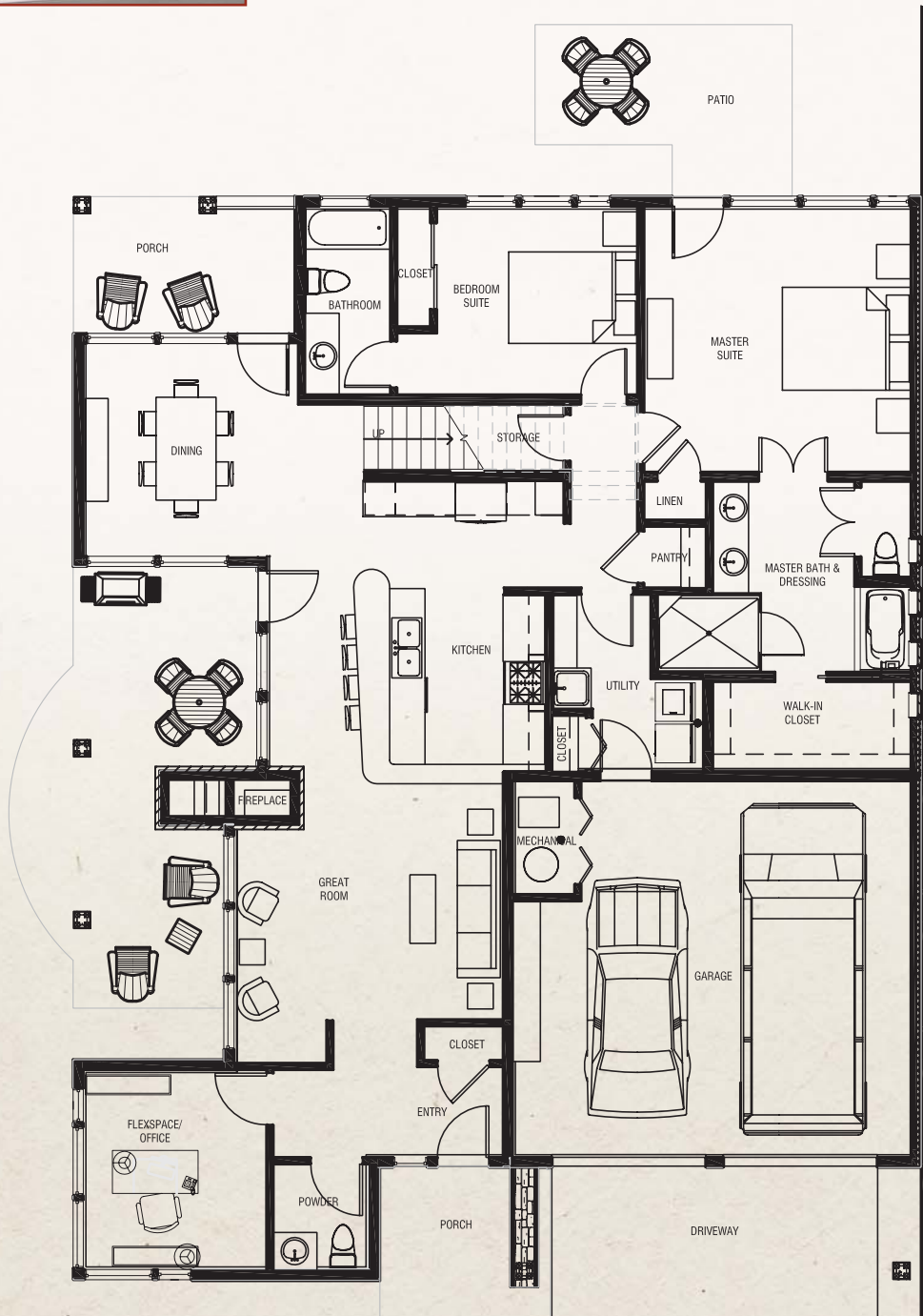
HOME PLANS & FEATURES

3/4 Bedroom, 2.5/3.5 Bath

Living Area: 2,449 or 2,773 Sq. Ft.



THE KNOLLS
AT HILLCREST



Main Level Floor Plan (See other side for Loft Plans)

3/32" = 1'-0"

Live Connected. Live Well.

Corner of Highland Blvd & Knolls Drive
Bozeman, Montana 59718 406.522.7084



www.TheKnollsAtHillcrest.com



Campion

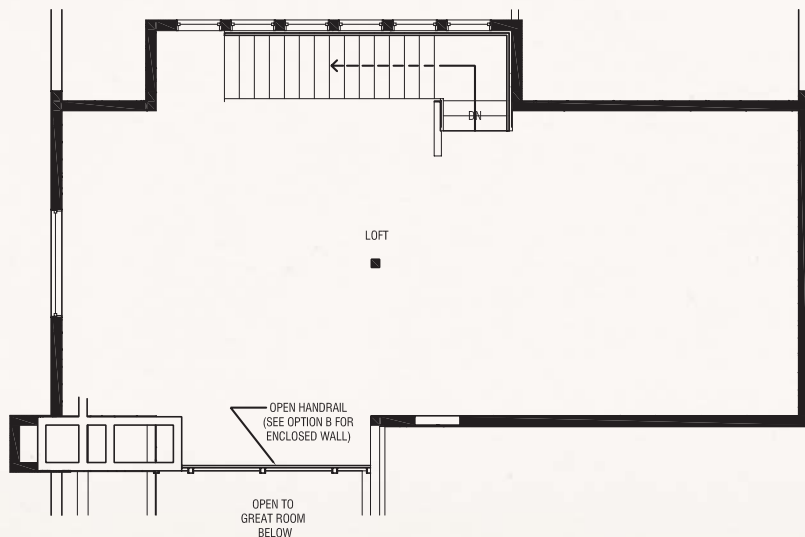
HOME PLANS & FEATURES

3/4 Bedroom, 2.5/3.5 Bath

Living Area: 2,449 or 2,773 Sq. Ft.



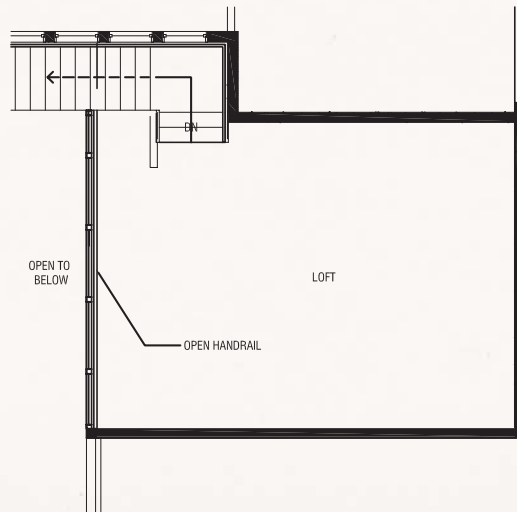
THE KNOLLS
AT HILLCREST



Upper Floor Plan "A"

(See other side for Main Floor Plan)

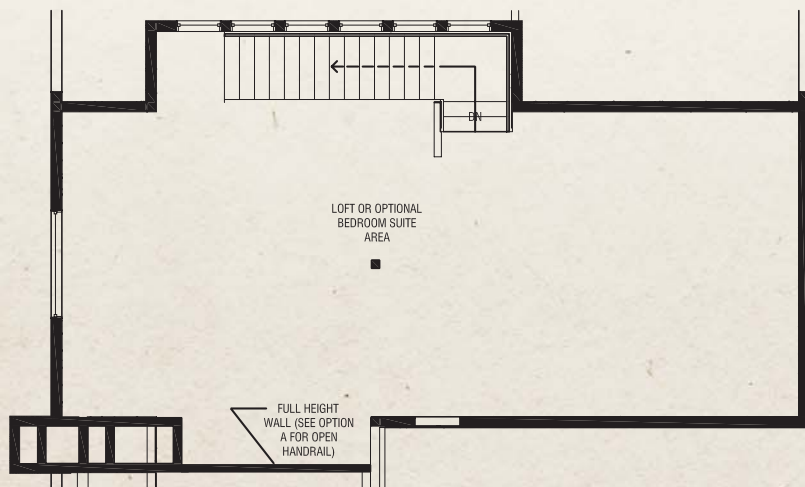
3/32" = 1'-0"



Upper Floor Plan "C"

(See other side for Main Floor Plan)

3/32" = 1'-0"



Upper Floor Plan "B"

(See other side for Main Floor Plan)

3/32" = 1'-0"

Live Connected. Live Well.

Corner of Highland Blvd & Knolls Drive
Bozeman, Montana 59718 406.522.7084



www.TheKnollsAtHillcrest.com



Campion

HOME PLANS & FEATURES

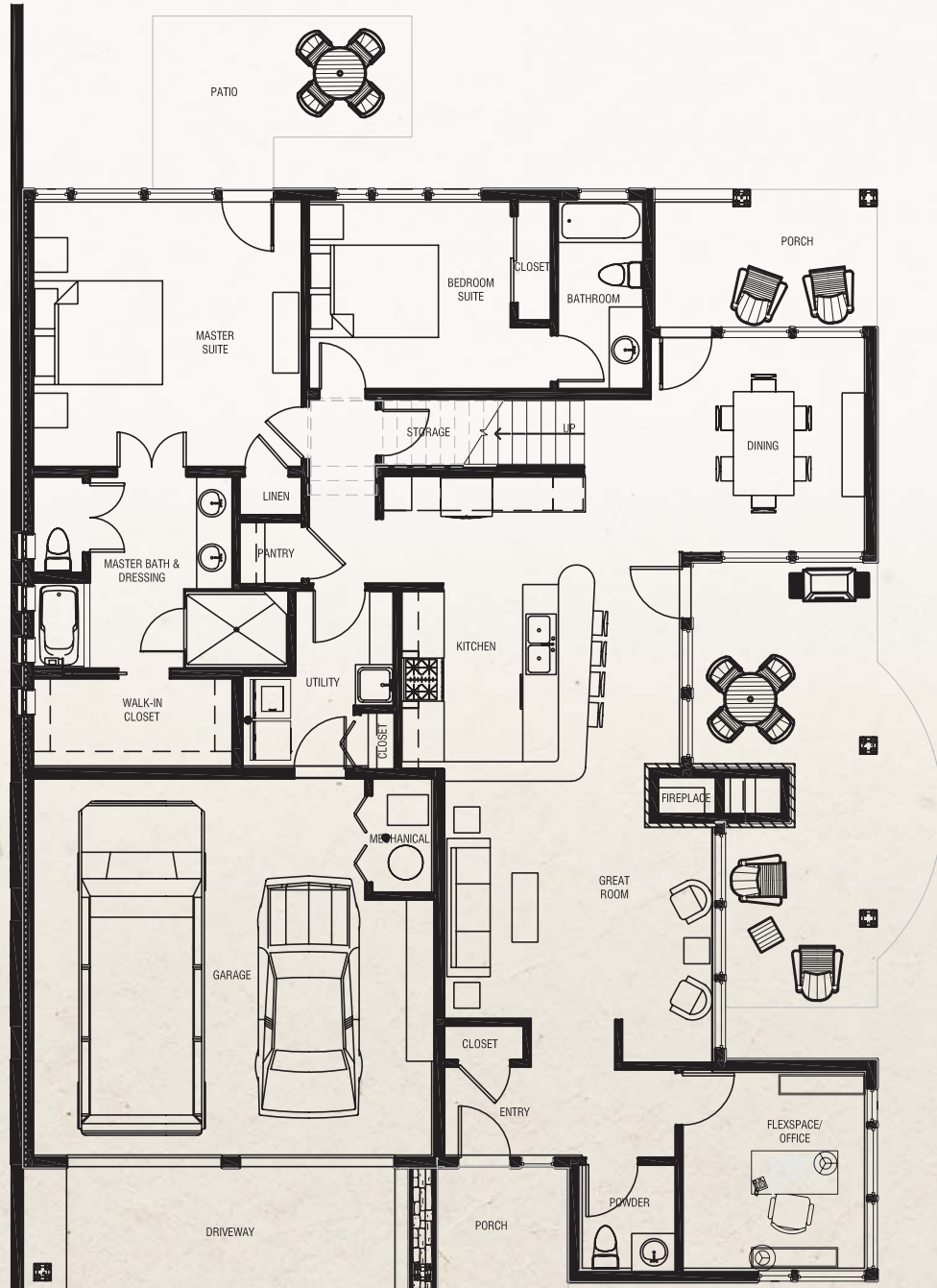
3/4 Bedroom, 2.5/3.5 Bath

Living Area: 2,449 or 2,773 Sq. Ft.



THE KNOLLS

AT HILLCREST



Main Level Floor Plan (See other side for Loft Plans)

3/32" = 1'-0"

Live Connected. Live Well.

Corner of Highland Blvd & Knolls Drive
Bozeman, Montana 59718 406.522.7084



www.TheKnollsAtHillcrest.com



Campion

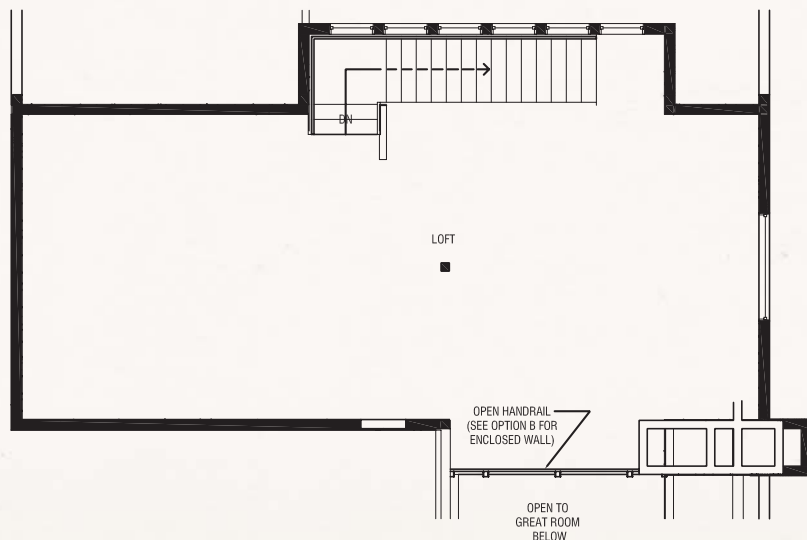
HOME PLANS & FEATURES

3/4 Bedroom, 2.5/3.5 Bath

Living Area: 2,449 or 2,773 Sq. Ft.



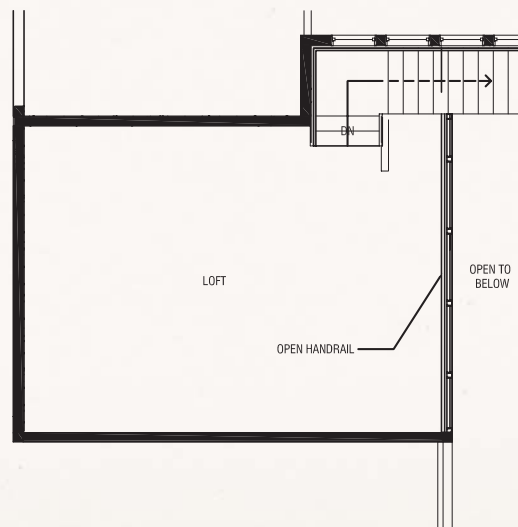
THE KNOLLS
AT HILLCREST



Upper Floor Plan "A"

(See other side for Main Floor Plan)

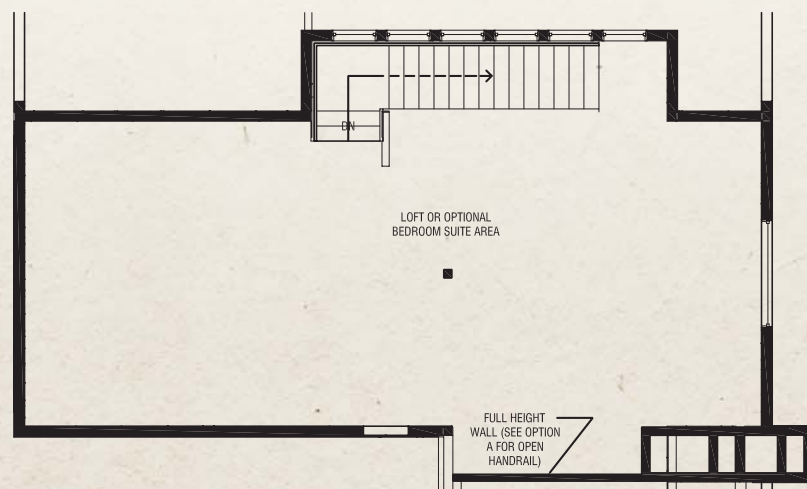
3/32" = 1'-0"



Upper Floor Plan "C"

(See other side for Main Floor Plan)

3/32" = 1'-0"



Upper Floor Plan "B"

(See other side for Main Floor Plan)

3/32" = 1'-0"

Live Connected. Live Well.

Corner of Highland Blvd & Knolls Drive
Bozeman, Montana 59718 406.522.7084



www.TheKnollsAtHillcrest.com